

# Welcome to Hitchin Girls' School Sixth Form Options Evening



This talk is fully booked. Please fill up from the front and use all available seats.

“Change can be daunting but HGS empowers you to make that change in a safe, familiar environment.” Year 12 Student





# Aims of the Evening

To provide information regarding Post-16 choices

Introduce you to the virtual website we have created

To help you make informed decisions about your future



# Why Hitchin Girls' School

- Vast range of subjects
- Supportive environment - academically and personally
- Specialist resources
- Wide range of enrichment
- Leadership opportunities
- Be part of the schools traditions and forming new traditions
- Exceptional results

# The Consortium

Hitchin Girls' School

Hitchin Boys' School

The Priory School





# The Prospectus

A wide range of  
A level subjects  
including Applied and  
BTEC options

## DELIVERY OF COURSES

Course Title	HBS	HGS	TPS	Course Title	HBS	HGS	TPS
Art and Design	●	●	●	Health & Social Care BTEC/Technical		●	●
Biology	●	●	●	History	●	●	●
Business	●	●		ICT BTEC	●		
Business BTEC	●		●	Investigative Science BTEC	●		
Chemistry	●	●	●	Latin		●	
Classical Civilisation		●		Mathematics & Further Mathematics	●	●	●
Computer Science	●	●	●	Media Studies	●	●	●
Core Maths		●	●	Music	●	●	●
Criminology	●	●	●	Music Performance/Sound Engineering BTEC			●
Digital Media			●	Performing Arts BTEC			●
Drama & Theatre	●	●		Philosophy & Ethics	●	●	●
Economics	●		●	Photography	●	●	●
English Language & Literature	●	●	●	Physical Education	●	●	●
English Literature	●	●	●	Physics	●	●	●
Extended Project Qualification (EPQ)	●	●	●	Politics	●	●	
Fashion & Textiles		●		Product Design	●	●	●
Film Studies			●	Psychology	●	●	●
Food Science & Nutrition	●	●		Sociology	●	●	●
French	●	●	●	Spanish	●	●	●
Geography	●	●	●	Sports Leaders	●	●	
German	●			Sport BTEC	●		
● = Provisional delivery by school(s) indicated. Teaching will be shared for some subjects by at least two schools.				Travel & Tourism BTEC			●

## ENTRY REQUIREMENTS

### Hitchin Sixth Form Consortium - 2024 Entry Requirements

Standard entry requirement for the Hitchin Sixth Form Consortium is five Grade 9-4 GCSEs or equivalent including English and Maths at Grade 4 or above. Most subjects will have additional entry requirements and all have a recommended GCSE Average Points Score (APS), this GCSE APS can be used as a guide when looking at post-16 choices.

The APS numbers in the table below are the recommended minimum requirement for entry to the course. Using national averages as a guideline, students achieving only the stated APS at GCSE can expect to achieve at least a low D grade at A-level in those subject areas. For Level 3 BTEC/Technical courses the expected minimum outcome with the APS shown would be a Merit grade.

Subject	APS	Additional GCSE Entry Requirements
Art & Design	3.75	Grade 5 in Art at GCSE*.
Biology	5	Grade 6 in Biology or Grade 7-6 in Combined Science. Grade 6 in Mathematics
Business	4	Grade 5 in Business at GCSE*
Chemistry	5	Grade 6 in Chemistry or Grade 7-6 in Combined Science. Grade 6 in Mathematics
Classical Civilisation	4	Standard entry requirements.
Computer Science	4.5	Grade 6 in Mathematics. Grade 5 in Computer Science at GCSE*
Drama & Theatre Studies	4	Grade 5 in Drama at GCSE*
Economics	4.5	Grade 6 in Mathematics
English Language & Literature	4.5	Grade 5 in English Language or Literature
English Literature	4.5	Grade 5 in English Literature
Fashion & Textiles	4	Grade 5 in Design & Technology at GCSE*
Film Studies	4.5	Grade 5 in English Language or Literature
French	4.5	Grade 6 in French
Geography	4.5	Grade 5 in Geography at GCSE* Grade 5 in Mathematics
German	4.5	Grade 6 in German
History	4.5	Grade 5 in History at GCSE*. Grade 5 in English Language or Literature
L3 BTEC in Business	3.5	Standard entry requirements.
L3 Applied Diploma – Criminology	3.5	Standard entry requirements.
L3 Technical Digital Media	3.5	Standard entry requirements.

# Combinations

## Medicine

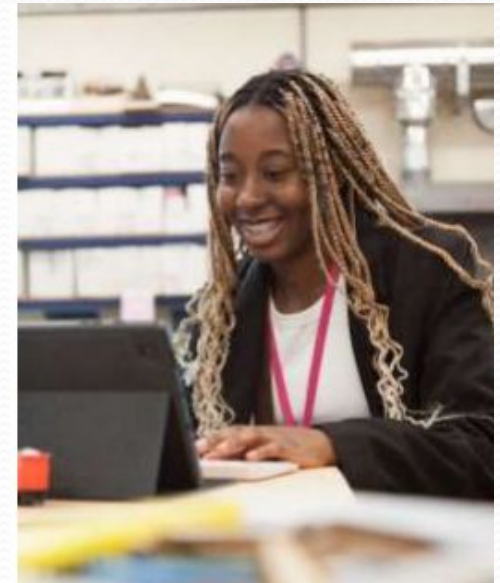
Chemistry / Biology / Maths / another subject eg English / History / Psychology

## Sport Science

PE / Biology / Psychology / Sociology / Health and Social Care

## Humanity subject

History / Geography / Classics / English / Politics





# Combinations

## **Finance**

Business Studies / Economics / Maths

## **Art**

Art / Design / Textiles / Media

## **Media**

Media Studies / ICT / English

## **Care profession**

Health and Social Care / Sociology / Psychology

N.B. Languages are viewed highly



“Year 12 means you can study the subjects you want to study. You are responsible for your own success. You get a lot of support from the teachers. There are so many subjects to choose from, that’s why the Consortium is good...”



A Specialist Science School  
and Academy Trust



# The Sixth Form



“It’s a challenge but an exciting one”

# What Will My Sixth Form Experience Involve?

27 - 36 hours teaching per fortnight in main subjects  
(across 3 - 4 subjects)

A tailored sixth form tutor time programme

Access to private study

A huge range of enrichment activities



# Enrichment Opportunities and Student Support

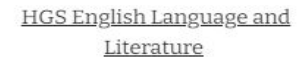
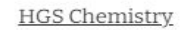
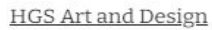
- **Learning Leaders and Ambassadors Programme**
- **Work Experience Programme**
- **Study Skills Workshops**
- **University Lectures**
- Opportunity to become part of our **extensive prefect team**
- **UCAS support** for students and parents
- Oxbridge, Medics, Dentistry and Veterinary Science support
- **Sport Leaders** Level 2 and Level 3
- **Extended Project** in year 12
- **School trips**
- Huge range of **clubs** – music, PE, classics, debating society etc



# Tradition



## A detailed black and white line drawing of a butterfly, showing intricate patterns on its wings and antennae. The drawing is highly detailed, with many fine lines and shading, giving it a realistic appearance. The butterfly is shown from a side profile, with its wings spread. The background is plain white.





The following subjects are offered by our consortium partners. Some subjects are offered at one of our partner school whilst others are offered at both. Where they are offered at both our partner schools you will be placed in the group that enables us to optimise all students' options. The links below will take you directly to the subjects offered across by our consortium partners.



[TPS Business Studies BTEC](#)



[TPS Economics](#)

[HBS Economics](#)



[TPS Digital Media](#)



[TPS Film Studies](#)



[TPS Health and Social Care BTEC](#)



[HBS ICT BTEC](#)



[TPS Music Technology: Sound  
Engineering or Music Performance](#)



[TPS Performing Arts BTEC](#)

The following subjects are offered by our consortium partners. Some subjects are offered at one of our partner school whilst others are offered at both. Where they are offered at both our partner schools you will be placed in the group that enables us to optimise all students' options. The links below will take you directly to the subjects offered across by our consortium partners.



[HBS Level 3 Sports BTEC](#)



[TPS Travel & Tourism](#)



[HBS BTEC Level 3 Forensic and  
Criminal Investigation](#)



[HBS BTEC Level 3 in Investigative  
Science](#)

#### Thursday 14th November TPS Subjects

- Business BTEC L3 National Diploma, Digital Media, Economics, Film Studies, Performing Arts (Acting) BTEC L3 Extended Certificate, Music Performance and Sound Engineering BTEC, Travel and Tourism BTEC

#### Tuesday 16th January 2024 HBS Subjects

- Business BTEC, Economics, Forensic and Investigative Science BTEC, ICT BTEC, Sport BTEC.

# Sixth Form Centre





# Students' Perspective



# Admission to the Sixth Form

You must also match or exceed the GCSE entry criteria  
to enter the Sixth Form

**5 x Level 4 grades or above  
(inc Maths and English)**

(This does not include short-course GCSE's)

For individual subjects please check  
entry requirements in the prospectus

# How does it work?

**Option 1**

9 hours a  
fortnight

**Option 2**

9 hours a  
fortnight

**Option 3**

9 hours a  
fortnight



**4th Subject**  
9 hrs

**EPQ**

**Core Maths**  
6 hrs

**Sports leaders**

# Timeline

November 2023	External applications open
11 December	External application deadline - any submissions after this date will only be considered if there are spaces in the subjects selected
January 2024	Internal post 16 options interviews
20 January	Year 11 Internal Options Submitted
February 2024 – April 2024	External options interviews
June	Student taster sessions
July/August 2024	All students complete bridging projects
August 2024	6 <sup>th</sup> form enrolment
September 2024	Start of year 12



**Thank you for listening and the  
very best of luck with year 11**