

Welcome to Hitchin Girls' School Sixth Form Options Evening



This talk is fully booked. Please fill up from the front and use all available seats.

“Change can be daunting but HGS empowers you to make that change in a safe, familiar environment.” Year 12 Student





Aims of the Evening

To provide information regarding Post-16 choices

Introduce you to the virtual website we have created

To help you make informed decisions about your future



Why Hitchin Girls' School

- Vast range of subjects
- Supportive environment - academically and personally
- Specialist resources
- Wide range of enrichment
- Leadership opportunities
- Be part of the schools traditions and forming new traditions
- Exceptional results

The Consortium

Hitchin Girls' School

Hitchin Boys' School

The Priory School



The Prospectus

A wide range of
A level subjects
including Applied and
BTEC options

DELIVERY OF COURSES

Course Title	HBS	HGS	TPS	Course Title	HBS	HGS	TPS
Art and Design	●	●	●	Health & Social Care BTEC/Technical		●	●
Biology	●	●	●	History	●	●	●
Business	●	●		ICT BTEC	●		
Business BTEC	●		●	Investigative Science BTEC	●		
Chemistry	●	●	●	Latin		●	
Classical Civilisation		●		Mathematics & Further Mathematics	●	●	●
Computer Science	●	●	●	Media Studies	●	●	●
Core Maths	●	●	●	Music	●	●	●
Criminology	●	●	●	Music Performance/Sound Engineering BTEC			●
Digital Media			●	Performing Arts BTEC			●
Drama & Theatre	●	●		Philosophy & Ethics	●	●	●
Economics	●		●	Photography	●	●	●
English Language & Literature	●	●	●	Physical Education	●	●	●
English Literature	●	●	●	Physics	●	●	●
Extended Project Qualification (EPQ)	●	●	●	Politics	●	●	
Fashion & Textiles		●		Product Design	●	●	●
Film Studies	●		●	Psychology	●	●	●
Food Science & Nutrition	●	●		Sociology	●	●	●
French	●	●	●	Spanish	●	●	●
Geography	●	●	●	Sports Leaders	●	●	
German	●			Sport BTEC	●		
● = Provisional delivery by school(s) indicated. Teaching will be shared for some subjects by at least two schools.				Travel & Tourism BTEC			●

ENTRY REQUIREMENTS

Hitchin Sixth Form Consortium - 2025 Entry Requirements

Standard entry requirement for the Hitchin Sixth Form Consortium is five Grade 9-4 GCSEs or equivalent including English and Maths at Grade 4 or above. Most subjects will have additional entry requirements and all have a required GCSE Average Points Score (APS), this GCSE APS can be used as a guide when looking at post-16 choices.

The APS numbers in the table below are the minimum requirement for entry to the course. Using national averages as a guideline, students achieving only the stated APS at GCSE can expect to achieve at least a low D grade at A-level in those subject areas. For Level 3 BTEC/Technical courses the expected minimum outcome with the APS shown would be a Merit grade.

Subject	APS	Additional GCSE Entry Requirements
Art & Design	3.75	Grade 5 in Art at GCSE.
Biology	5	Grade 6 in Biology or Grade 7-6 in Combined Science. Grade 6 in Mathematics
Business	4	Grade 5 in Business at GCSE
Chemistry	5	Grade 6 in Chemistry or Grade 7-6 in Combined Science. Grade 6 in Mathematics
Classical Civilisation	4	Standard entry requirements.
Computer Science	4.5	Grade 6 in Mathematics. Grade 5 in Computer Science at GCSE
Drama & Theatre Studies	4	Grade 5 in Drama at GCSE
Economics	4.5	Grade 6 in Mathematics
English Language & Literature	4.5	Grade 5 in English Language or Literature
English Literature	4.5	Grade 5 in English Literature
Fashion & Textiles	4	Grade 5 in Design & Technology at GCSE
Film Studies	4.5	Grade 5 in English Language or Literature
French	4.5	Grade 6 in French
Geography	4.5	Grade 5 in Geography at GCSE. Grade 5 in Mathematics
German	4.5	Grade 6 in German
History	4.5	Grade 5 in History at GCSE. Grade 5 in English Language or Literature
L3 BTEC in Business	3.5	Standard entry requirements.
L3 Applied Diploma – Criminology	3.5	Standard entry requirements.
L3 Technical Digital Media	3.5	Standard entry requirements.

Combinations

Medicine

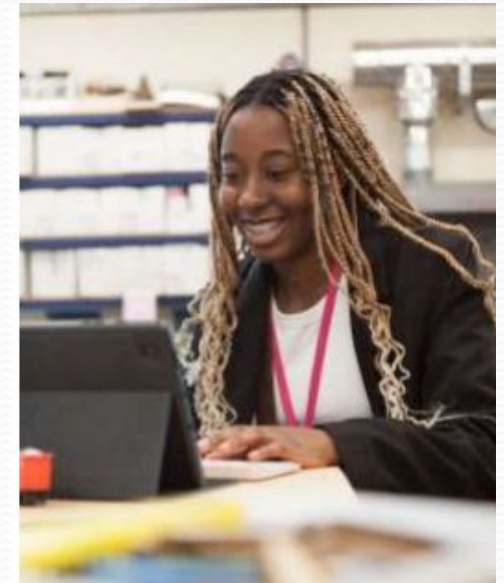
Chemistry / Biology / Maths / another subject eg English / History / Psychology

Sport Science

PE / Biology / Psychology / Sociology / Health and Social Care

Humanity subject

History / Geography / Classics / English / Politics



Combinations

Finance

Business Studies / Economics / Maths

Art

Art / Design / Textiles / Media

Media

Media Studies / ICT / English

Care profession

Health and Social Care / Sociology / Psychology

N.B. Languages are viewed highly



“Year 12 means you can study the subjects you want to study. You are responsible for your own success. You get a lot of support from the teachers. There are so many subjects to choose from, that’s why the Consortium is good...”



A Specialist Science School
and Academy Trust



The Sixth Form



“It’s a challenge but an exciting one”

What Will My Sixth Form Experience Involve?

27 - 36 hours teaching per fortnight in main subjects
(across 3 - 4 subjects)

A tailored sixth form tutor time programme

Access to private study

A huge range of enrichment activities

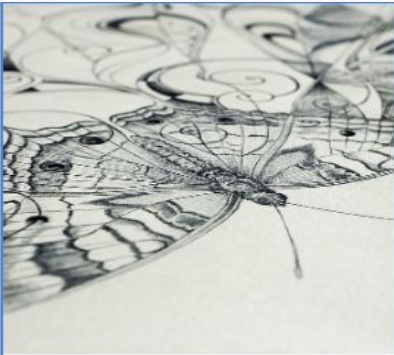
Enrichment Opportunities and Student Support

- **Learning Leaders and Ambassadors Programme**
- **Work Experience Programme**
- **Study Skills Workshops**
- **University Lectures**
- Opportunity to become part of our **extensive prefect team**
- **UCAS support** for students and parents
- Oxbridge, Medics, Dentistry and Veterinary Science support
- **Sport Leaders** Level 2 and Level 3
- **Extended Project** in year 12
- **School trips**
- Huge range of **clubs** – music, PE, classics, debating society etc

Tradition



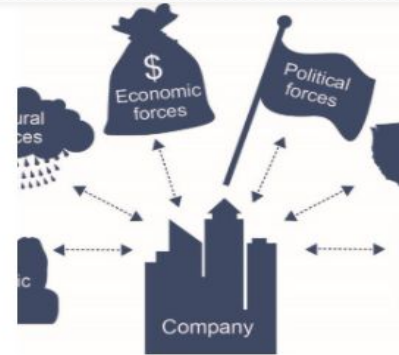
Finding out about the subjects



HGS Art and Design



HGS Biology



HGS Business Studies



HGS Chemistry



HGS Classic Civilisations



HGS Computer Science



HGS Drama and Theatre Studies



HGS English Language and Literature

The following subjects are offered by our consortium partners. Some subjects are offered at one of our partner school whilst others are offered at both. Where they are offered at both our partner schools you will be placed in the group that enables us to optimise all students' options. The links below will take you directly to the subjects offered across by our consortium partners.



[TPS Business Studies BTEC](#)

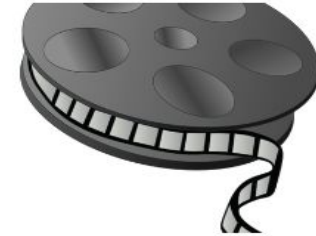


[TPS Economics](#)

[HBS Economics](#)



[TPS Digital Media](#)



[TPS Film Studies](#)



[TPS Health and Social Care BTEC](#)



[HBS ICT BTEC](#)



[TPS Music Technology: Sound Engineering or Music Performance](#)



[TPS Performing Arts BTEC](#)

The following subjects are offered by our consortium partners. Some subjects are offered at one of our partner school whilst others are offered at both. Where they are offered at both our partner schools you will be placed in the group that enables us to optimise all students' options. The links below will take you directly to the subjects offered across by our consortium partners.



[HBS Level 3 Sports BTEC](#)



[TPS Travel & Tourism](#)



[HBS BTEC Level 3 Forensic and
Criminal Investigation](#)



[HBS BTEC Level 3 in Investigative
Science](#)

Sixth Form Centre



Students' Perspective



Admission to the Sixth Form

You must also match or exceed the GCSE entry criteria to enter the Sixth Form

**5 x Level 4 grades or above
(inc Maths and English)**

(This does not include short-course GCSE's)

For individual subjects please check entry requirements in the prospectus

How does it work?

Option 1

9 hours a fortnight

Option 2

9 hours a fortnight

Option 3

9 hours a fortnight



4th Subject
9 hrs

EPQ

Core Maths
6 hrs

Sports leaders

Timeline

November 2024	External applications open
12 December 2024	External application deadline - any submissions after this date will only be considered if there are spaces in the subjects selected
January 2025	Internal post 16 options interviews
24 January 2025	Year 11 Internal Options Submitted
February – April 2025	External options interviews
25th June 1st July 2025	Mandatory student taster sessions
Summer 2025	All students complete bridging projects
21st August 2025	GCSE results day and 6 th form enrolment
September 2025	Start of year 12



**Thank you for listening and the
very best of luck with year 11**